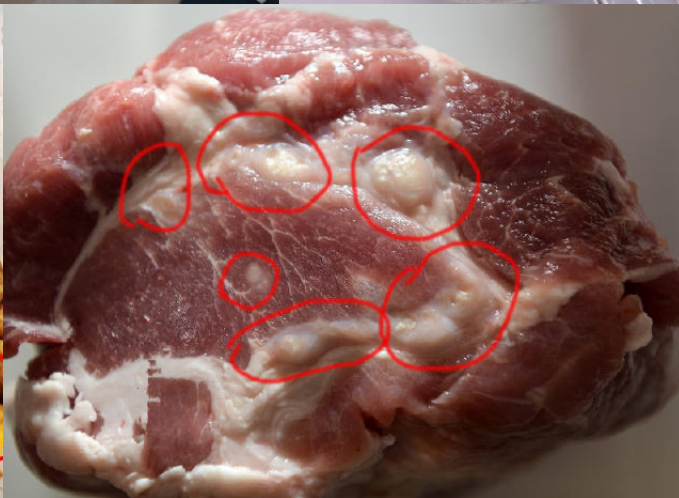


# Share Vegetable Garden in a Community

Hanchun ZHANG, Project Specialist



# Fact



# Fact



# Fact



The summer is getting hotter and hotter, and the meals at home would be spoiled soon.

How should we reduce the waste of spoiled food in summer?



Committee



## Our Mission

Making sustainable development fun for everyone

## Our Vision

Leading sustainable development education in China

GLY is the organization dedicated to sustainable development education

GLY guides Chinese youth to understand the United Nations Sustainable Development Goals.



# Proposal

## Community' facts

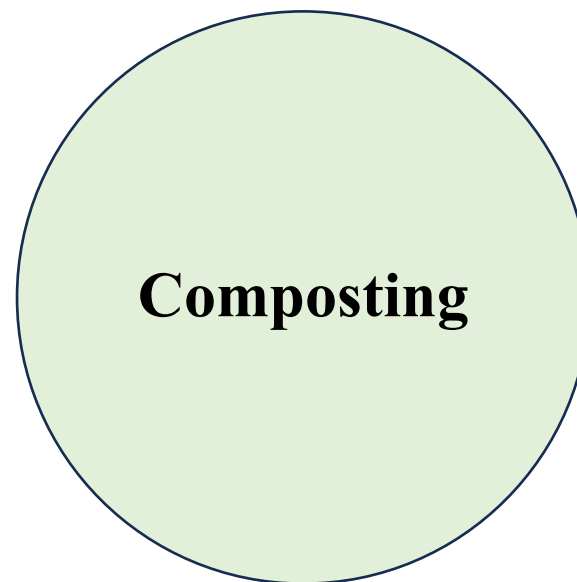
## GLY' proposal

The summer is getting hotter and hotter, and the meals at home would be spoiled soon.

**Education of Climate Change**

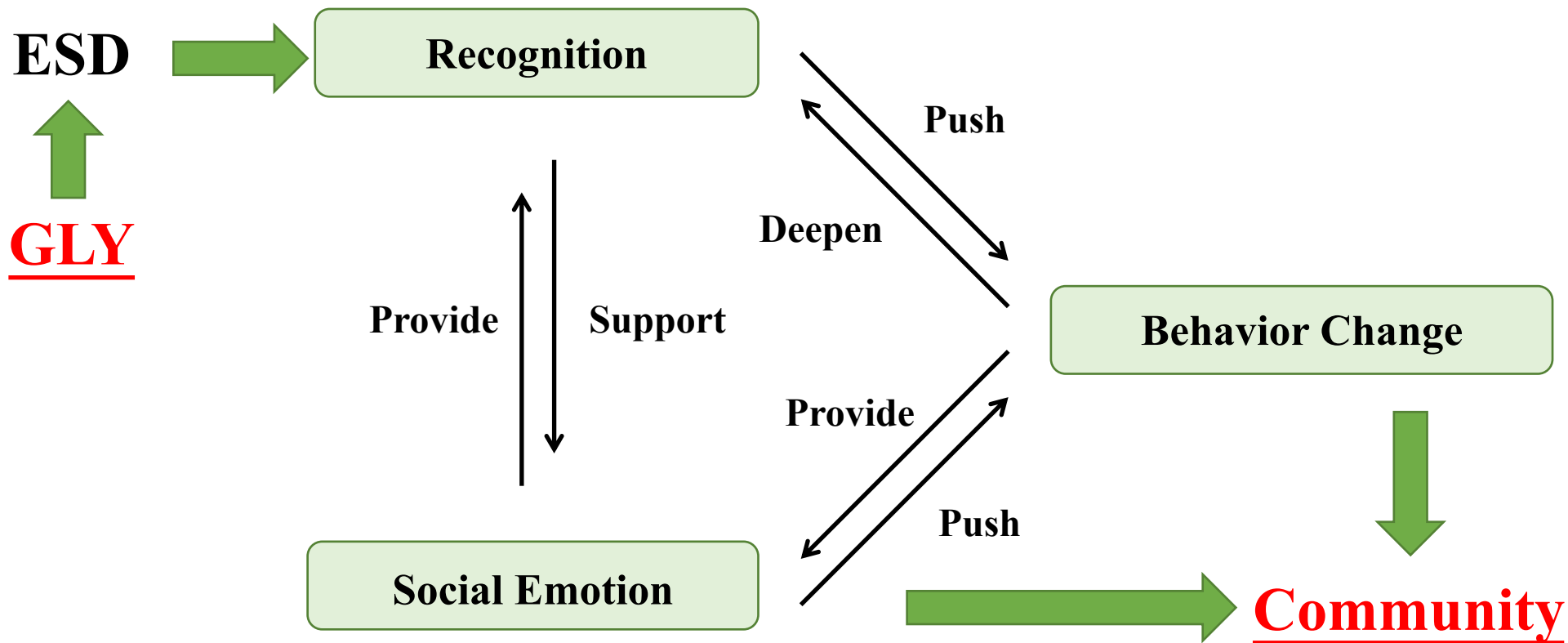
How should we reduce the waste of spoiled food in summer?

**Composting**



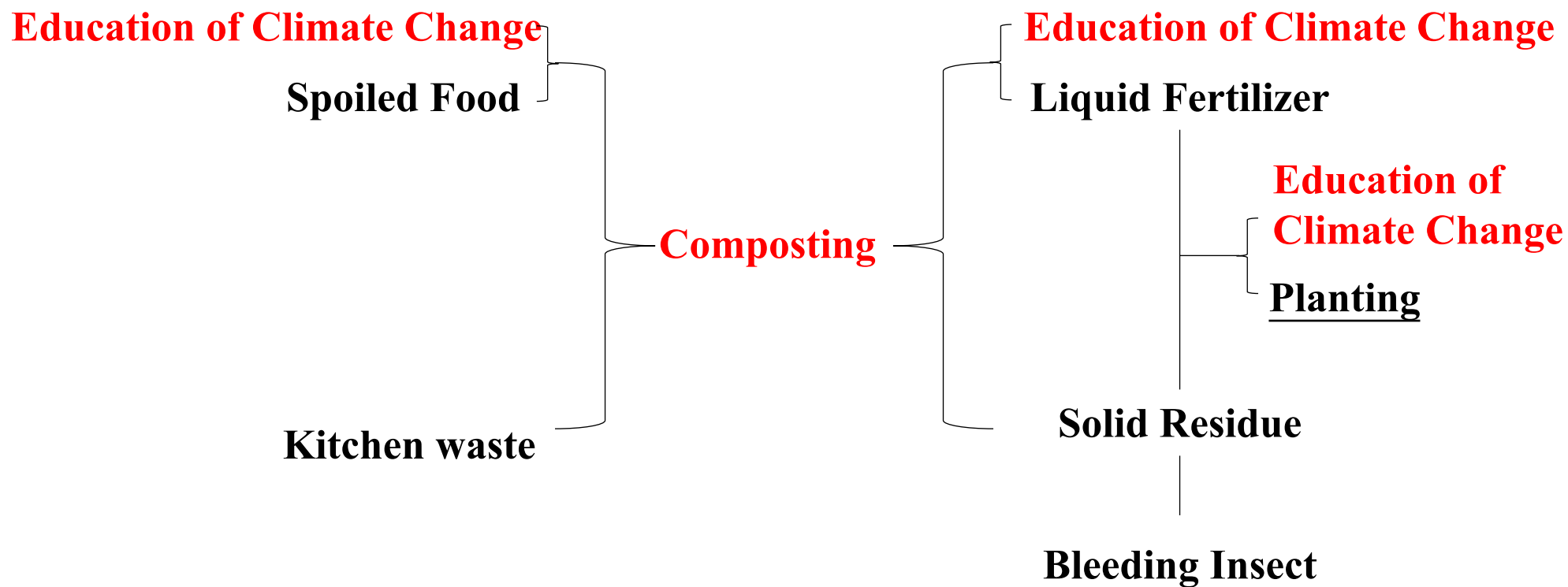
## Shared Vegetable Garden in a community

## The UNESCO ESD for 2030 Roadmap



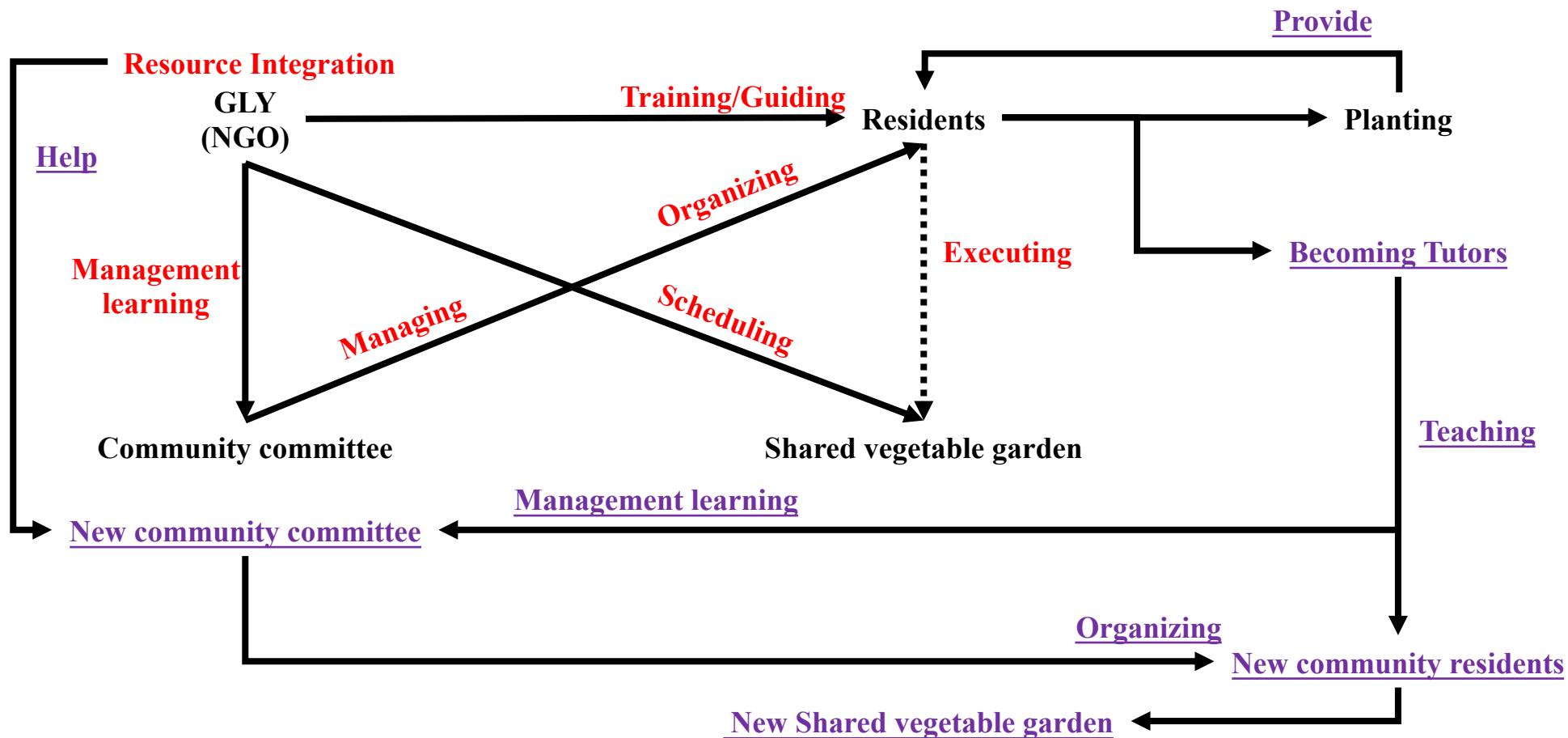


## Education model of GLY(NGO)



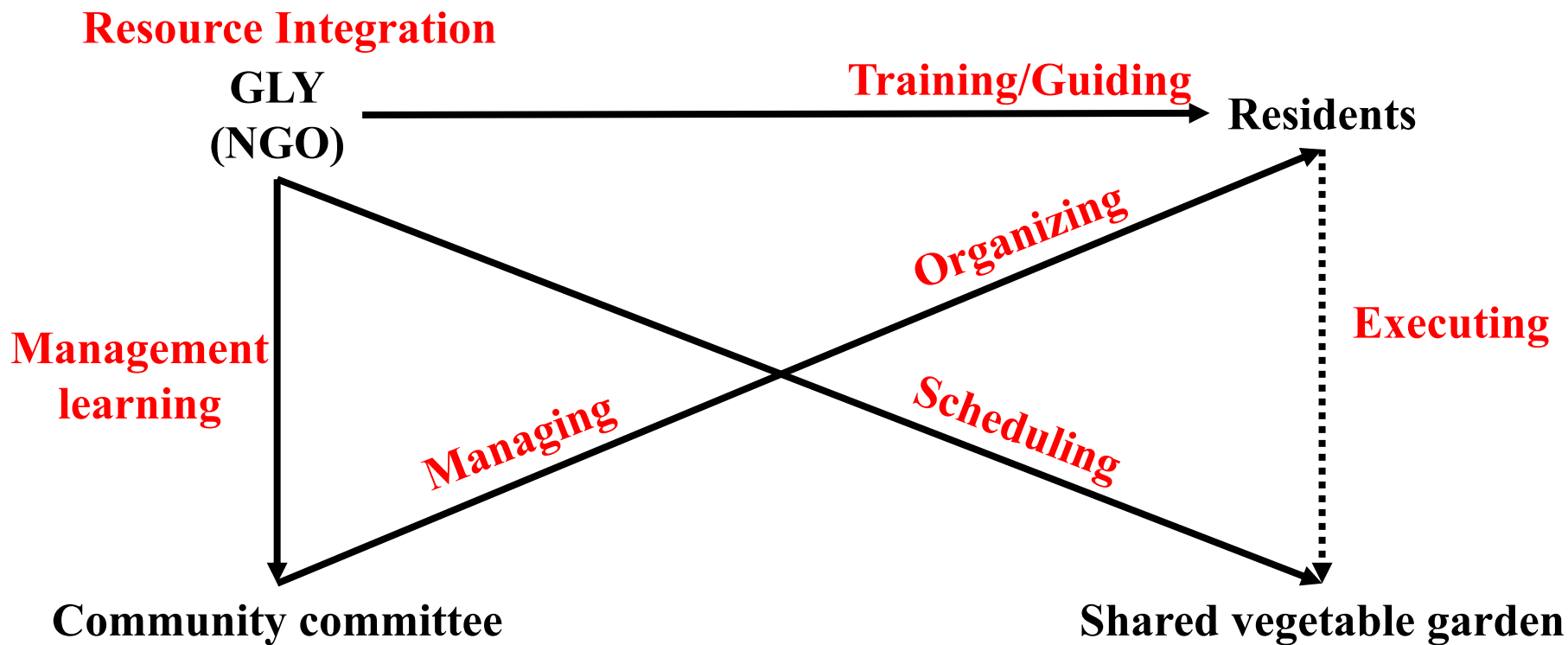
# Implement

## Education model of GLY(NGO)



# Implement

## Initialization Phase



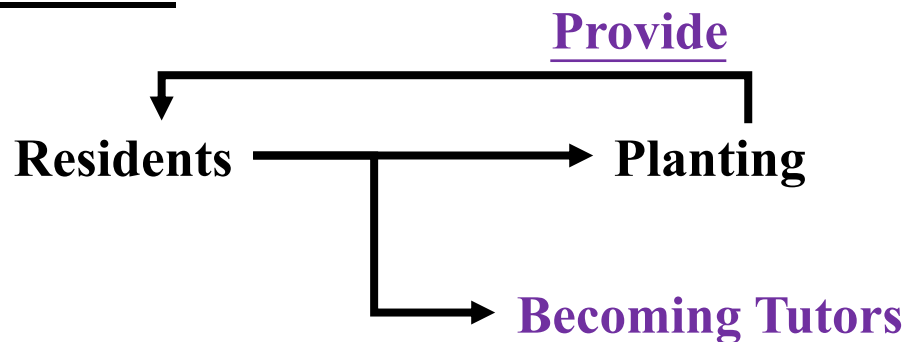
# Implement

## Dimple Effect

### Resource Integration

GLY  
(NGO)

Help



Provide

Residents

Planting

Becoming Tutors

Teaching

Management learning

New community committee

Organizing

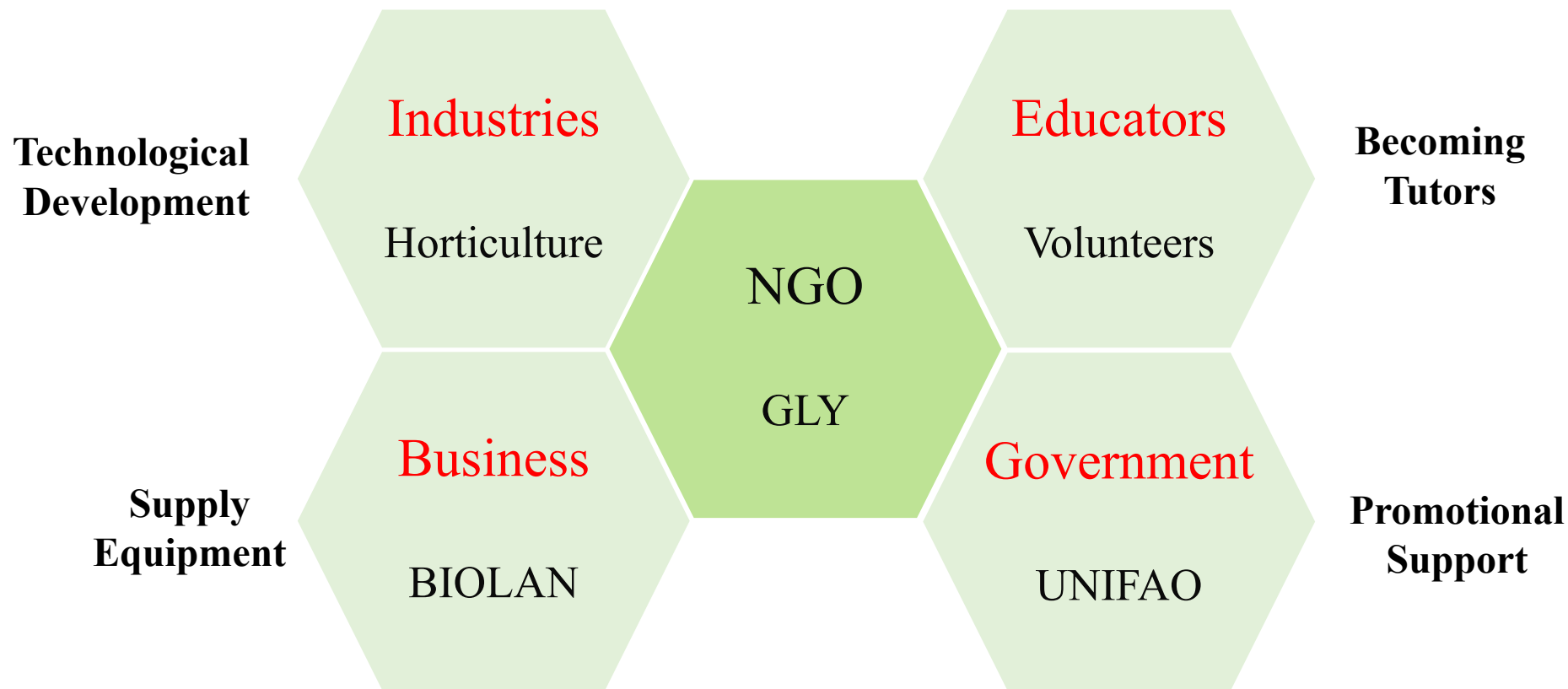
New community residents

New Shared vegetable garden



# Implement

## Resource Integration



# Directly Related



**106** Generate awareness about your city's environment footprint.



**123** Get involved in your community and organize climate actions and eco-friendly initiatives.



# Impact

July, 2020

2023

- Engaged **almost 500 residents** in Meisong Community
- **Approximately 2100 kg kitchen waste** has been dealt by composting .

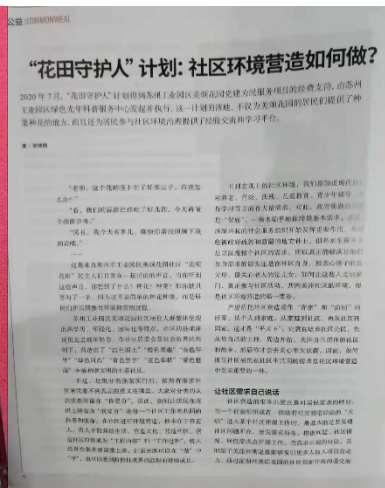


# Impact

July, 2020

2023

- Reported by local media for **7 times**
- Been published on the China Environmental Journal (**national journal**) and the 11th issue of *GROUND UP* in 2022
- Award the best Practice Cases for 2022 in Good Food Fund.





# The practice can be replicated and transferred

## General setting

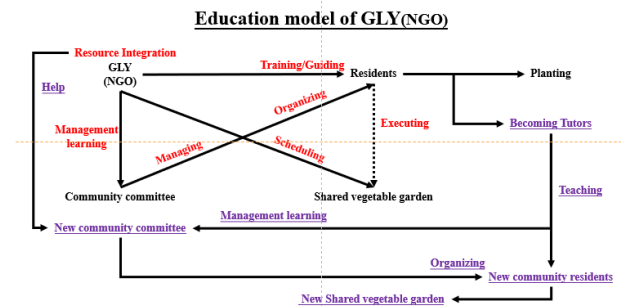
- Kitchen waste/spoiled
- Human behave

## Transferable

- Using the public space
- Solution loop
- Much kitchen waste has been dealt by composting

## Innovation

- Community Autonomy



绿色微芽在花箱里破土而出

让我们共同呵护和滋养我们赖以生存的家园

争  
环  
保  
创  
文  
明  
爱  
花  
草

THANK YOU!

Hanchun ZHANG: +86 18052440087