



Parallel Session 2 - Europe

13th GLOBAL RCE CONFERENCE DAY 3

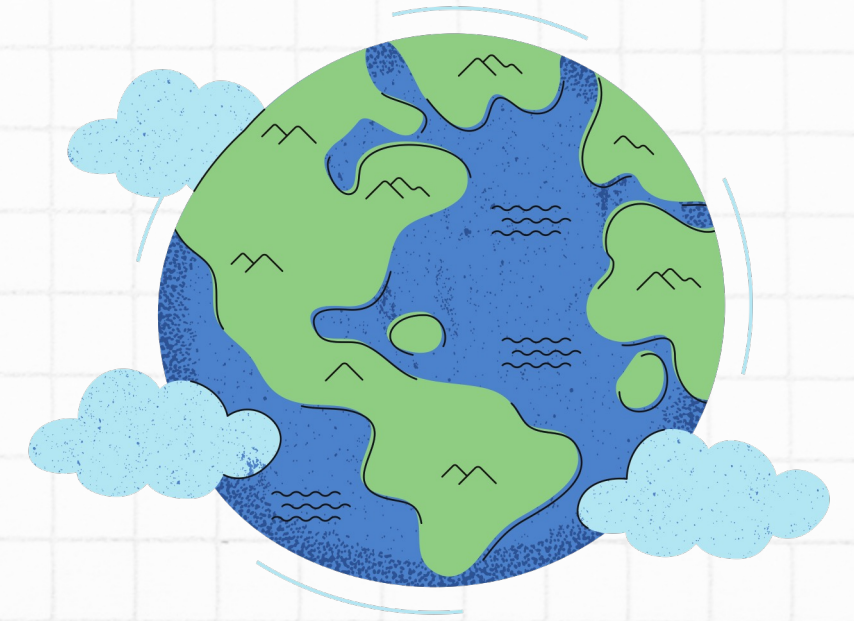
Dr. Betsy King and Aukje Sina Zijlstra





Welcome

Selamat datang!



LET'S DO A ROUND OF INTRODUCTIONS

Europe Youth RCE team 

		
COMMUNITY MANAGER	COMMUNICATION OFFICER	POLICY ADVISOR

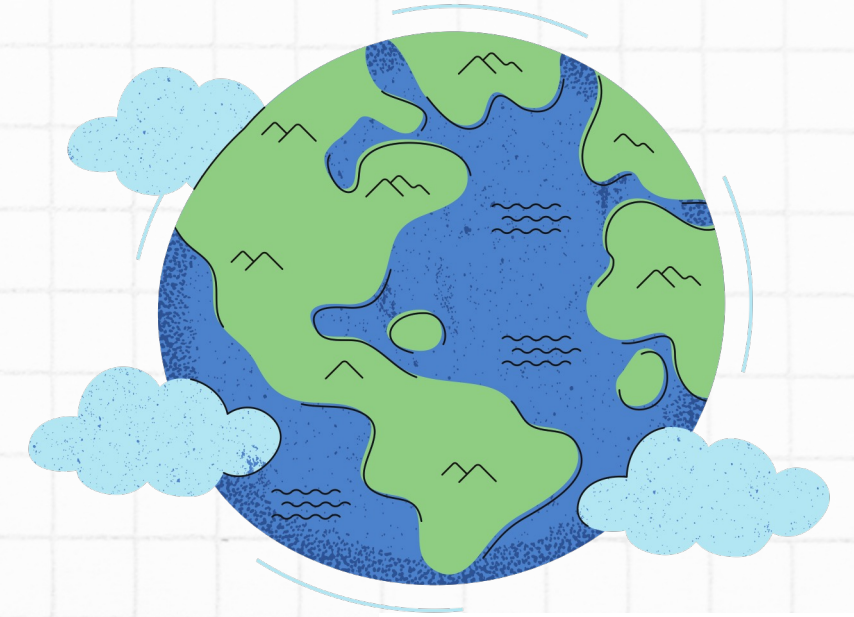
Aukje Sina Zijlstra
rceyouth europe.co@gmail.com



Dr. Betsy King - Regional Advisor
betsyking@lfsscotland.org



Discussion questions

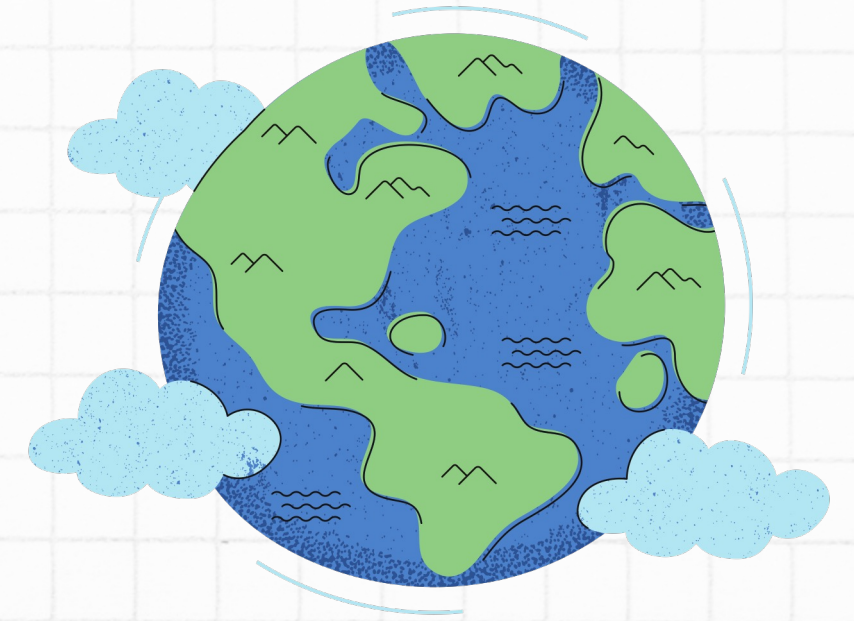


- How can RCE collaborations within and between regions be facilitated?
 - What kind of mechanisms could be useful?
- How can we engage more young people in the activities of European RCEs?





ACKNOWLEDGED BY



Sharing our collective

outcomes

Thank you & let's stay in touch!

betsyking@ifsscotland.org

rceyouth europe.co@gmail.com



[youthcoordinators.europe](https://www.instagram.com/youthcoordinators.europe)