

EAST AFRICAN RCEs WORKSHOP

**RCE-Greater Pwani Contribution to Research and
Innovation through Community Engagement**

At Masinde Muliro University / Golf Hotel

By

RCE-Greater Pwani

1-2nd August, 2013

Introduction

- The RCE-Greater Pwani network is engaged in fostering partnership and networking in the coast region
- Adopt strategies to ensure change in public attitudes and more so the educational approaches to keep pace with the evolving challenges of sustainable development
- RCE-Greater Pwani is also engaged in advocacy and vision-building, consultation and ownership, capacity-building and training, research and innovation, information and communication technologies and monitoring and evaluation
- The greater coastal region of Kenya extends from the southeastern tip at Vanga to the lower part of end of Northeastern region

Vision and Mission statements

Vision

- A leading RCE in advancing Education for Sustainable Development activities

Mission

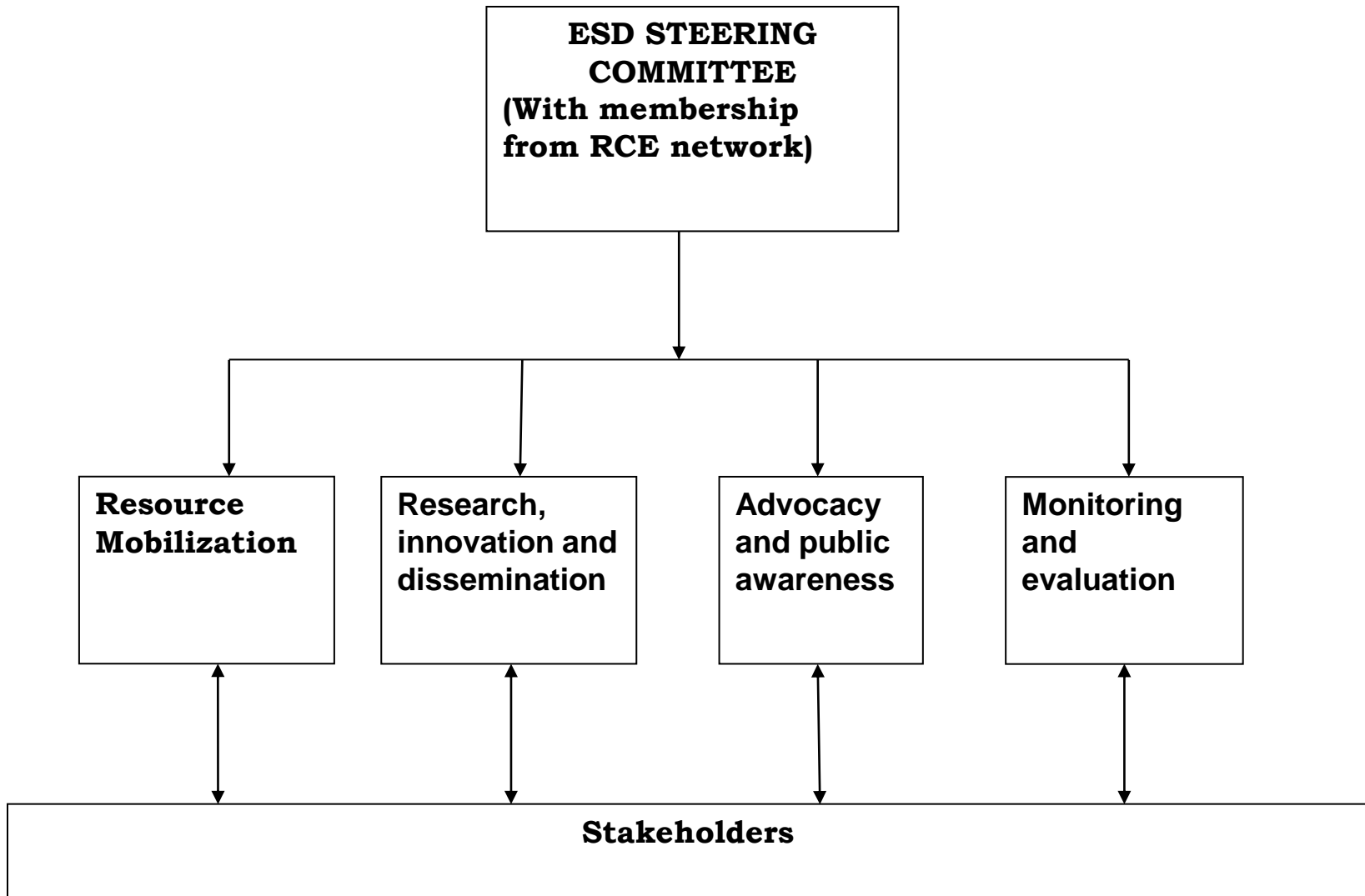
- To network, generate, disseminate and apply ESD knowledge, Skills and attitude for sustainable development in the coastal region

- **Highlights of the RCE Greater Pwani achievements**

Some of the achievements of the RCE-Greater Pwani are;

- Several awareness and sensitization workshops for both the university management and stakeholders
- Governance and management structure has been agreed upon by stakeholders
- Collaborative projects have been initiated
- Thematic area for collaboration have been developed
- RCE-Greater Pwani has managed to bring stakeholders together to undertake sustainable development activities
- ESD policy has been developed

Governance and management structure of the RCE network



Mariculture project

- It is a collaborative ESD project between, Pwani University, Fisheries department of the ministry of fisheries, Kilifi, COMRED and Kibokoni community
- with funding from the National Commission for Science, Technology and Innovation. The Mariculture project is at Kibokoni village, Kilifi creek.
- The project is on enhancing Food Security among Coastal Fisher Communities and promote Small Scale Mariculture Technologies along the Kilifi Creek
- The project is building capacity and helping the community construct, maintain and use facilities for production of aquatic organisms
- The broad objective of the proposed project is to enhance food security among coastal fisher communities in Bahari sub-county through small scale mariculture.

Wangari Mathai forest at Pwani University

- This project aimed at demonstrating to students (University/primary/secondary) and community on best forest conservation practices
- . It covers about 1.5 acres within the university.
- The project implementation is done by the University Environmental Club with technical input from the club patron and partners from Kenya forest service (KFS)
- The forest is composed of various tree species.

Climate change and environmental management project

- It is a Collaborative ESD project between Pwani University, COBEC and Marereni community
- Funding from the Community Development Trust Fund/DANIDA
- The project is assisting the local community to identify a range of coping mechanisms for reducing the vulnerability to climate change
- The project takes cognizance of indigenous methods already in use with a view to strengthen them and enhance livelihood options to generate income.
- The project empowers communities to take charge of the conservation, management and governance of natural resources by strengthening existing and creating new community structures

Lake Chem Chem restoration project

- It is a collaborative ESD project between Pwani University, Ganda Community, NEMA, NGOs, CBOs, Kilifi County government and Government lead agencies.
- Main goal is to restore the lost ecosystems goods and services for environmental and socio-economic benefits.
- Restoration plan has already been developed and adopted with support from NEMA.
- Initial cost of restoration is 40M. National Drought Management Authority and Kilifi County government has already made commitments.

Establishment of a Natural Resource Forum

- The RCE-Greater Pwani and its partners have formed County Natural resources forums in Kilifi and Kwale Counties
- To address thematic areas for sustainable natural resources management and utilization in a devolved system of government
- To allow participation of the local communities in decision making
- To provide a mechanism and platform at the county level where issues of public interest are discussed through public involvement

Documentation of best ESD practices in the region

- The RCE-Greater Pwani and its network has documented the best ESD practices from the different works of the partners
- The document dubbed, the ESD Newsletter is designed for easy reading and given in pictorial form for people of diversified understanding levels to conceptualize
- The News letter highlights the best practices in biodiversity conservation, climate change mitigation and adoption, solid waste management, sustainable livelihoods, environmental governance and capacity building

Learning and Research Botanical Garden

- Pwani University in partnership with NEMA has established a botanical garden to promote environmental education and ITK for Sustainable Development.
- It contains different plant species (herbal, succulents, cosmetics, fruits and timber) from different ecosystems
- The role of a botanical garden is to maintain documented collections of living plants for the purposes of scientific research, conservation, education and recreation
- This is one of the flagship projects implemented under the umbrella of Regional Centre of Expertise – Greater Pwani
- The Botanical Garden showcases thematic segments such as medicinal, wild-food plants, cosmetic and ornamental plants, as well as rare and endangered plant species

Bioinnovate project

Bio-innovate project, in partnership with the private sector (Vipingo Sisal Plantations and Universities in East Africa (Pwani university, University of Dar es salaam and University Ethiopia) on enhancing Mushrooms production and biogas generation from sisal waste

The project is aimed at transferring biotechnology to the private sector for use and for commercial production of the products

The project undertakes tissue culture from the sisal waste substrate. It is from the sisal waste that mushrooms are produced and the same waste produces biogas

The technology is eventually to be transferred to the communities through training and capacity building.

RCE-Greater Pwani needs and awareness

Action research

- The RCE in partnership with WWF (CKP) is undertaking awareness action research
- To find out the extent of awareness of the RCE-Greater Pwani and ESD in the greater coastal region
- To guide action plans and to develop appropriate strategies to engage stakeholders on an informed platform
- The research is also to find out ways of engaging more stakeholders to undertake collaborative ESD activities in the region

challenges

- Funding for coordination
- Coordinating the stakeholders
- Lack of awareness on ESD objectives and strategies among stakeholders
- Stakeholders bringing in their own interests,
- Complex sustainable development challenges at the coast

Way forward

- Funding from the government agencies to be channeled through RCEs
- Encourage collaborative project funding
- The regional RCE network/UNU/IAS to facilitate joint projects
- County Governments to support and facilitate joint ESD venture/activities

Conclusion

- The RCE-Greater Pwani has integrated research and innovation into community engagement through collaborative activities with the communities
- It has endeavors to transfer technical expertise to the local communities for sustainable development
- Communities are empowerment to undertake simple technical activities for the sustainability of collaborative ESD projects
- Therefore the RCE-Greater is transforming the lives of the coastal communities through collaborative engagement

